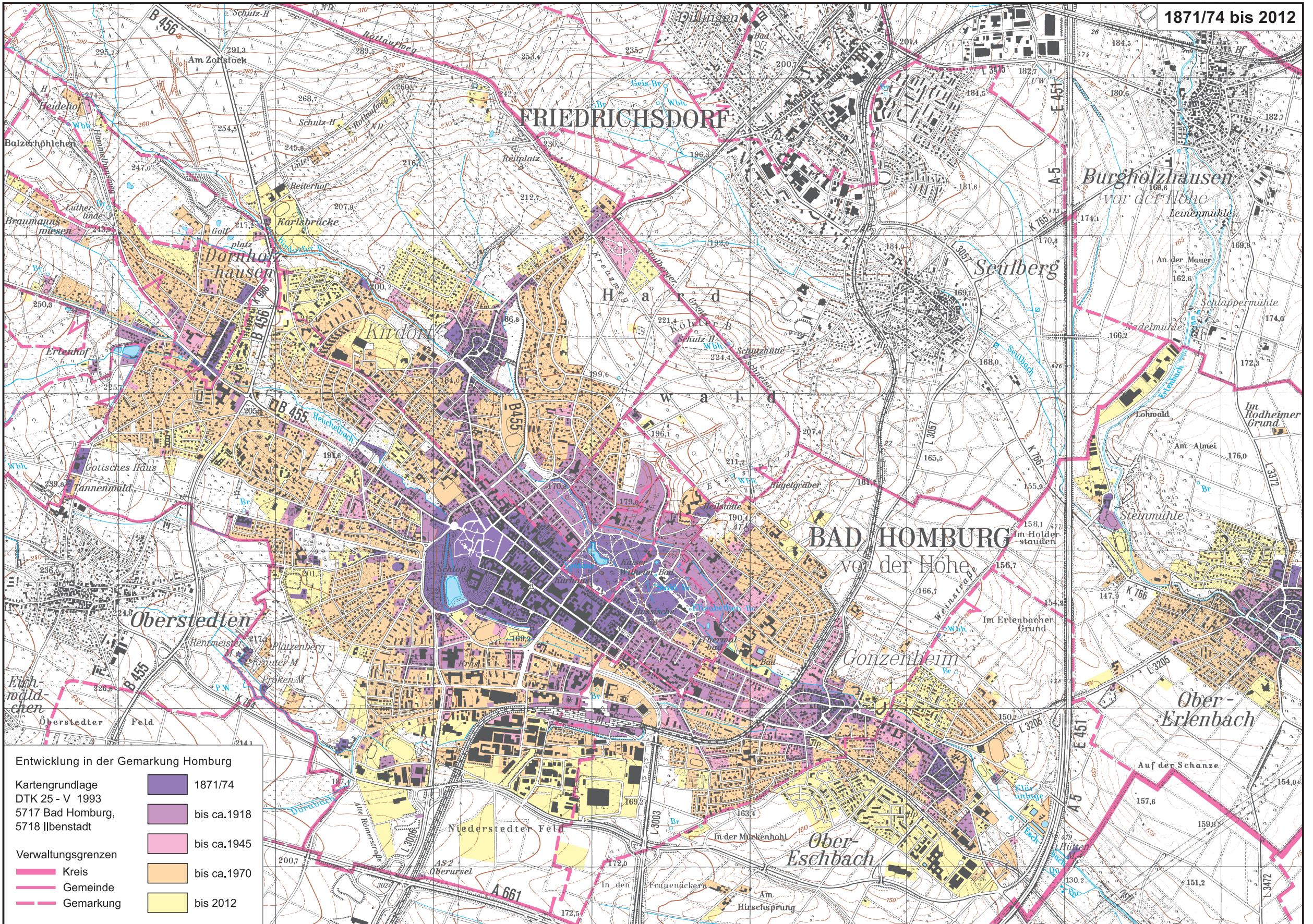




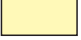





1871/74 bis 2012



Entwicklung in der Gemarkung Homburg

Kartengrundlage DTK 25 - V 1993 5717 Bad Homburg, 5718 Ilbenstadt	 1871/74  bis ca.1918  bis ca.1945  bis ca.1970  bis 2012
Verwaltungsgrenzen	
 Kreis	
 Gemeinde	
 Gemarkung	